

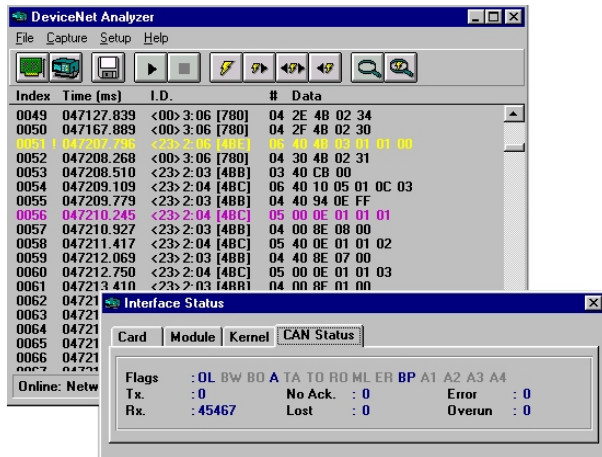
/// **DeviceNet DIAGNOSTIC AND** /// **CONFIGURATION TOOLS**

Overview

SST Diagnostic and Configuration Software Tools for DeviceNet consist of the DeviceNet Analyzer, DeviceNet Monitor and the DeviceNet Node Commissioning Tool. Windows 95/98 and Windows NT V4.0 operating systems are supported. DeviceNet diagnostic and configuration tools are available for SST DeviceNet interface cards (excluding VME bus format).

DeviceNet Analyzer

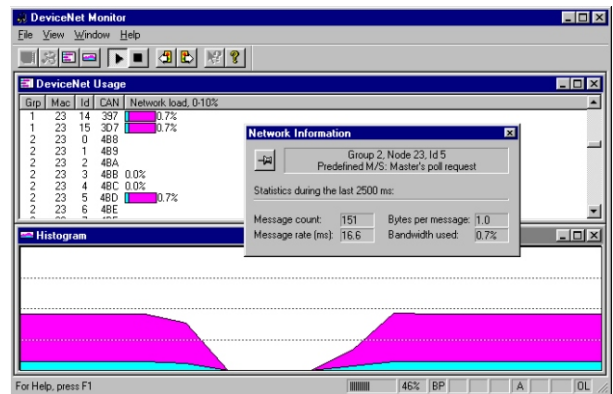
The SST DeviceNet Analyzer is a diagnostic tool, which allows you to capture and analyze traffic on your DeviceNet network. Captured messages can be displayed in CAN or DeviceNet format and include a break down of the MAC ID, Message Group, and Message ID allowing you to more easily identify messages and network configuration problems. All messages include a timestamp with microsecond resolution, which allows for accurate measurement of device response and network scan times. The Analyzer provides message filtering and trigger capabilities which allow you to more precisely identify problems on your network. All network captures can be saved to disk as a text file for later analysis.



SST DeviceNet Diagnostic and Configuration software are available with SST DeviceNet Interface Cards

DeviceNet Monitor

The SST DeviceNet Monitor provides you with a graphical view of your DeviceNet network traffic and performance. Information can be displayed in a variety of configurations allowing you to identify network scan times, device update times, and network bandwidth usage from a single device, message, or network perspective.



Available with SST DeviceNet Interface Cards*

- DeviceNet Node Commissioning Tool
- DeviceNet Network Analyzer / Monitor
- Microsoft Windows 95/98/NT drivers / DLLs
- Custom driver development software
- OPC Server
- 24/7 Global Technical Support

* varies by bus format, contact SST for details

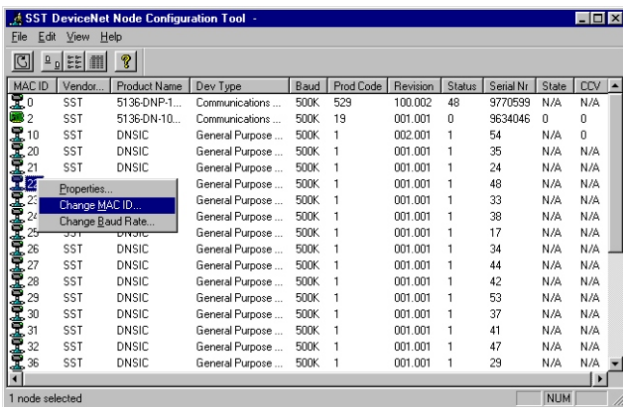


Network Diagnostic and Configuration Software

www.mySST.com

DeviceNet Node Commissioning Tool

The SST DeviceNet Node Commissioning Tool provides node commissioning capabilities when configuring a DeviceNet network. The Commissioning Tool allows you to browse a network and configure the MAC ID and baud rate of the devices detected. More complex configuration of devices is possible via the explicit messaging interface, which allows you to read/write attributes to each of the identified devices.



Other Reference Materials

Web Site

- www.mySST.com/swtools/dncont.htm

Related DeviceNet Products

- Network Interface Cards connect various computer bus formats to industrial networks
- Network Gateways
- PLC Network Modules connect programmable controllers to industrial networks and I/O devices
- Data Servers include OPC and DDE Servers

Affiliations

- Active member of Open DeviceNet Vendor Association (ODVA)

Ordering Information

- Call SST for more information

Also available from SST:

**Gateways
PLC Modules
Data Servers
Interface Cards
Embedded Solutions
I/O Simulation Software
Diagnostic and Configuration Software**

www.mysst.com

EDNDIAG April 2002

**50 Northland Road
Waterloo, Ontario
Canada N2V 1N3
Tel: 519-725-5136
Fax: 519-725-1515
Sales@mySST.com**

**43 rue Mazagran
76320 Caudebec-I s-Elbeuf
France
Tel: +33-2-32-96-04-20
Fax: +33-2-32-96-04-219
info@applicom-int.com**

**Landmark Tower 43F
Minatomirai 2-2-1, Nishi-ku
Yokohama-city 220-8143 Japan
Tel: +81-4-5224-3560
Fax: +81-4-5224-3561
sst@woodhead.co.jp**

W Woodhead Connectivity
applicom • Brad Harrison • mPm • NetAlert • RJ-Lnxx • SST
THE GLOBAL LEADER IN INDUSTRIAL COMMUNICATIONS AND CONNECTIVITY